

WHEELCHAIR ACCESSORIES CATALOGUE



DAHER

www.daherproducts.com

DAHER

**Many of our products can be altered and/or modified to accommodate specific client needs.
Please contact us for more information.**

Phone: 204-663-3299 | Fax: 204-663-3422

Email: sales@daherproducts.com | www.daherproducts.com

CONTENTS



Head and Neck Supports

Head and Neck | Full Support Headrest | Large Headrest
Combination Headrest | Lateral Support Headrest
Small Headrest | Neck Rest | Headrest Hardware
Chin Support Pad with Removable Cover
Wheelchair Headrest



Thoracic Support Pads

Bolster Thoracic Support (BTS) Pads
Bolster Thoracic Support (BTS) Pad Hardware
Side Support Pad | Swing-Away Side Support Hardware



Chest Harnesses

Regular | Slim | Extended | Center Release
Slim Extended Styles | Custom



Modular Supports

Y-Style | Two Point | Four Point | Attachment Kit

Armrests

Wheelchair | Regular and Desk | Side Panel
Channel | Modified Channel | Hand Pad | Flat
Elbow Support | Swivel Armrest Mount



Accessories / Hardware

Portable Toilet Seat Pad
Tie Down Protector Sleeve

BASIC PRINCIPLES TO ACHIEVE A STABLE SITTING POSTURE

Reference: Seating in Review: Currents Trends for the Disabled

©Otto Bock Orthopedic Industries of Canada LTD.



Principles of biomechanics must be considered when adapting seating systems to individual clients. Failure to do so will result in the application of forces which tend to produce further deformity rather than the intended correction.

Because the pelvis provides the base of support in sitting, efforts must be made to center the torso over the pelvis. Stability is also dependent on the strength of the supportive muscular. Adaptive seating attempts to compensate for a person's inability to maintain posture alignments by assisting him/her to stabilize the pelvis (thus providing a firm base of support) and to center the torso over this base of support.

The key to a balanced position is a stable base: the greater the area of contact between a body and supporting surface, the greater the stability. In a balanced position, distribution of forces is improved, thereby reducing the tendency of spinal deformation and/or pressure sores. Without balance, concentrated pressure areas and excessive rotational forces on the spine result.

Friction and pressure are other factors to be considered: the greater the force of friction, the better the stability of the body, ie: a slippery surface (low friction) will cause the person's body to slip out of its corrected position.

By increasing the area of contact with the body, pressure is reduced. Should pressure exceed approximately two (2) pounds per square inch, skin breakdown is likely to occur.

The recommended fitting sequence for a successful seating system for the client is:

1. stabilizing the pelvic area;
2. working up to the thoracic area; and
3. providing head support, a successful fitting will enhance and not limit the client's ability to function. Where possible only supportive aids that allow a degree of freedom of movement should be used, eg. flexible chest harnesses.

In summary, the final seating system should be assessed on basis of:

1. comfort to the client;
2. enhancement to the client's ability to function; and
3. ease of application by the caregiver.

Daher Head and Neck Supports

After the pelvis and the trunk are stabilized, a client with some degree of head control may be able to function when provided with head and/or neck support.

Head and neck supports designed and manufactured by Daher are anatomically contoured to ensure optimal function and support. In attempting to address the different disabilities with their varying degrees of involvement, all products were designed in close collaboration with seating technologists, therapists and doctors.

The supports are molded from self-skinning polyurethane foam which encapsulates the sturdy structural steel mounting inserts. In our products, the metal insert is shaped to follow as closely as possible to the outer edge. By having the plate as close to the outer edge as possible, the problem of the foam tearing at the edge of the metal structure is all but eliminated.

The durable textured surface allows easy cleaning with mild soap and water.

Stock supports are available only in black; custom colors are available when ordered in large quantities.

Mounting is by the recognized three point spherical hardware.

NOTE: Standard three point spherical mounting hardware is available from Daher and may be used on all neck rests and headrests.

Standard features of all Daher Headrests

- Heavier steel gauge inserts for greater strength. This reduces the tendency for the headrest to deform, especially when used with very hypertonic clients
- Inserts are designed to follow as closely as possible to the outer edge of the foam, eliminating areas of large overlap. (*Large overlap of foam tends to cause tearing along the rigid edge.*)
- Headrests and neck rests can be custom contoured by hand to accommodate various individual requirements
- Stainless steel screws optional

Headrest – Small



The [Daher Small Headrest](#) is intended for use where moderate amount of head support is required.

Features:

- Small headrests are used where minimal head support is required. They are often applied only to provide a degree of safety during transportation.
- More contoured shape to provide comfortable support in the occipital area
- Maximum relief in the area of the ears
- Small headrest with stainless steel insert also available.

Headrest – Large



The [Daher Large Headrest](#) is intended for use where a moderate amount of head support is required.

Features:

- Contoured to give comfortable support in the occipital area
- Extended wings to prevent the client from becoming trapped between the back rest and the headrest
- Top of wings are rounded downward to ensure maximum eye contact
- Relief contours in the area of the ears
- Extended and squared-off ends for increased lateral support

Headrest – Lateral Support



In addition to the features of the [Daher Combination Headrest](#), the [Daher Lateral Support Headrest](#) gives, as the name implies, additional lateral control. This support is designed to accommodate the more involved client.

Features:

- Pronounced contouring for intimate contact in the occipital and cervical areas
- Maximum relief in the area of the ears
- Extended lateral support in the cervical area
- Maximum support without interference during transfer of the client

Headrest – Full Support



The [Daher Full Support Headrest](http://www.daherproducts.com) incorporates an ergonomic design based on anatomical principles to provide maximum comfort and support for the most involved client.

Features:

- Total relief in the area of the ears
- Contours to fit intimately in the cervical and occipital areas
- Extended support to the top of the head
- Extended protrusions provide lateral support to keep the head in a centered position
- No interference with line of vision
- Limited adjustment capability by hand contouring to custom fit the client

Hardware – Headrest



The [Daher Headrest Hardware](#) is designed to allow easy adjustment of the head/neck support pads in all three planes. Universal adjustment of the pads is made possible by the incorporation of a 1" steel ball. A pre-drilled mounting bracket is included with the hardware. Two configurations are available, straight and offset, in black only.

Features:

- Tubular steel components are finished with a scratch resistant powder coating
- Aluminum components have a hard anodized coating
- Wheelchair mount has a one-piece locking clamp manufactured by CNC technology
- Heli-coil insert prevents the threads from stripping inside the aluminum
- Four winged positive grip knob is factory molded to a 1/4 x 20 screw



The purpose of the stop collar is to keep the desired position of headrest mounting hardware should be headrest assembly be removed. The aluminum collar is held solidly in place with a set screw and will fit any standard 1/2" square tubing. This convenient piece of hardware is also available anodized (black only).

Chin Support Pad with Removable Cover



The purpose of the [Chin Support Pad with Removable Cover](#) is to keep the client's chin off of their chest so they are more comfortable, can see directly ahead of themselves with ease, and will be less susceptible to injury from uncontrolled, spastic movements. The cut of the material allows for distribution of support to neck muscles so the airway is not constricted. Ample room for breathing and swallowing makes this product comfortable, supportive, functional, and effective.

The [Chin Support Pad with Removable Cover](#) consists of two separate pieces that clip together. The upper foam portion contains a hidden zipper which allows the inner foam to be removed for easy washing and maintenance. The lower portion is a customized chest harness which secures the product into place.

Features:

- Made from hospital-grade material
- Chest harness portion is customizable
- Removable cover is easy to wash and keep clean
- No forehead strap means more comfortable and attractive



Chin Support



Features:

- Core cover is made from hospital-grade material
- No forehead strap means that it is more comfortable and attractive

Side Support Pad and Swing-Away Side Support Hardware

As the name implies, our Side Support Pad and Swing-Away Side Support Hardware was designed to unlock from its position and swing away to facilitate transfers. The pads can then be locked back into place for safe and secure support. The hardware is also available in stainless steel so it can go onto shower chairs.



Side Support Pad Medium

Side Support Pad Large

Adjustable Side Support Pad Medium

Adjustable Side Support Pad Medium with Stainless Steel Insert

Adjustable Side Support Pad Large

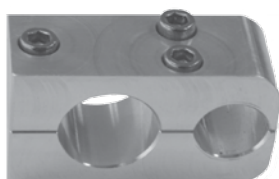
Adjustable Side Support Pad Large with Stainless Steel Insert

Side Thoracic Support Pad



Side Support 1" Tube Clamp

Side Support 7/8" Tube Clamp



Swing-Away Side Support Hardware, 1" offset, left

Swing-Away Side Support Hardware, 1" offset, right

Swing-Away Side Support Hardware, 2" offset, left

Swing-Away Side Support Hardware, 2" offset, right

Swing-Away Side Support Hardware, 3" offset, left

Swing-Away Side Support Hardware, 3" offset, right



Daher Chest Harness

Provides stability and maximum freedom



The [Daher Chest Harnesses](#) are used to stabilize the trunk in the anteroposterior direction in cases where there is extreme weakness of the trunk musculature.

[Daher Chest Harnesses](#) are designed to allow the client maximum freedom within their functional range of motion. The flexible and comfortable support, rather than total restraint, improves overall client acceptance and performance.

The harnesses are available in two styles – the regular style features a full chest panel. The slim design accommodates the adult population and is most suitable for the female body or when minimal coverage of the chest is required. Both styles are available in standard and extended versions. They are easily removed using the quick-release buckles.

Supporting pads of our harnesses are made from durable 1/4" neoprene material with laminated stretchable cloth on both sides. The outer edge is finished with a Lycra cloth strip increasing its durability, restricting over stretching and giving a smooth finish – preventing skin abrasion. It is this combination that provides maximum range of motion, client comfort and stability as well as product durability.

ONLY LATEX-FREE MATERIALS ARE USED.

NOTE: It is recommended that pelvic support belts be used in combination with the chest harness.

Examples of Custom Harnesses



Custom harnesses are available for the individual with specific needs. Contact a Daher Manufacturing sales representative with your request. If possible, please include a sketch or preferably a pattern.

Optional attachments are available for all harnesses.



Add SS to end of all chest harness numbers.

NOTE: For safety reasons, either top or bottom must have a non-adjustable attachment.

Variations such as Velcro release (replacing top buckles) or cam-lock buckles may be ordered on a custom basis. Belt anchors are also available as an option.

IMPORTANT: When ordering, specify type of attachment required.

The Extended Chest Harnesses have longer upper padding to accommodate taller or larger individuals.
(Note measurement B on the chart.)

Also they are anatomically contoured to fit more intimately to the body.

NOTE: All chest harnesses use 1" attachment kit, sold separately.

CLEANING

The harness may be cleaned using warm water and mild soap.

NOTE: When machine drying is required, it must be limited to a low-temperature cycle.

Chest Harness with Center Release



The [Daher Chest Harness with Center Release Buckle](#) is ergonomically designed for all-day comfort. It features an easy-to-use release buckle which facilitates the process of removing the client from their wheelchair. The ability to remove someone quickly and easily who is otherwise bound to their seat could save lives in the event of an emergency.

The standard back D-ring is adjustable for the best fit to any and all wheelchairs and offers maximum support and comfort. As with the rest of the Daher chest harnesses.



*Available only in Standard Chest Harness sizes (see chart).
Add CR to end of Standard Chest Harness part number.*

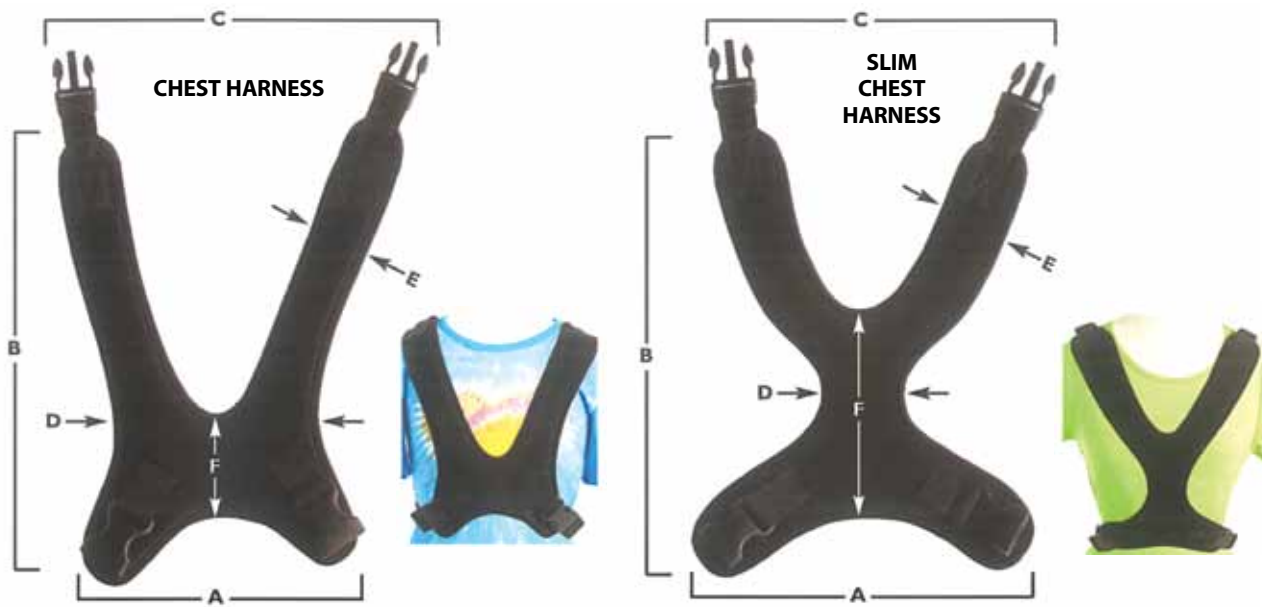


The [Daher Chest Harness with Center Release Zipper](#) is an alternative to the Daher Chest Harness with Center Buckle Release. Undoing the zipper requires less force than undoing a buckle which is beneficial to the client with less hand and forearm strength. For those who have a limited range of motion, a string can be attached to the zipper for easier access and release from the chest harness. The zipper is a durable, heavy duty closure which provides easy access in the event of an emergency.



*Different sizes available.
Add Z to end of Chest Harness part number.*

Chest & Extended Chest Harnesses



Standard Chest Harnesses

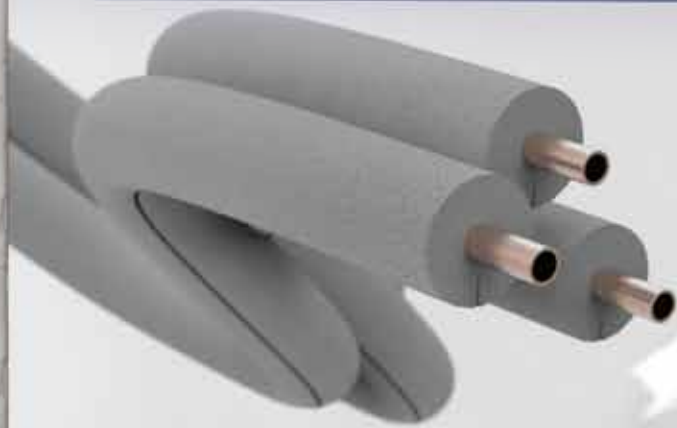
SIZES	A	B	C	D	E	F
Extra-Small	5.5"	7.5"	7.7"	5.0"	1.5"	3.5"
Small	7.2"	12.5"	9.0"	5.5"	1.7"	2.8"
Medium	8.0"	12.5"	9.6"	6.4"	1.8"	3.0"
Large	8.4"	14.4"	11.5"	6.6"	2.2"	3.1"
Slim Extra-Small	5.3"	8.0"	7.9"	1.8"	1.4"	4.5"
Slim Small	7.3"	11.5"	7.8"	2.2"	2.0"	5.3"
Slim Medium	9.4"	12.2"	8.2"	2.2"	1.9"	5.7"
Slim Large	8.8"	16.5"	9.8"	2.3"	2.2"	7.5"
Slim Extra-Large	10"	22"	11.8"	3.2"	2.5"	7.8"

Extended Chest Harnesses

SIZES	A	B	C	D	E	F
Extra-Small	5.6"	10.0"	8.5"	5.0"	1.6"	3.5"
Small	7.8"	14.5"	9.2"	6.0"	2.0"	3.0"
Medium	8.2"	15.0"	10.3"	6.6"	2.1"	3.0"
Large	8.5"	17.0"	11.5"	6.8"	2.3"	3.3"
Slim Extra-Small	5.5"	10.2"	8.2"	2.0"	1.6"	4.5"
Slim Small	7.4"	14.0"	8.8"	2.1"	2.1"	5.8"
Slim Medium	9.6"	15.0"	9.1"	2.4"	2.1"	6.5"
Slim Large	9.0"	19.5"	11.0"	2.5"	2.3"	8.0"

Got an idea?
Explore the
possibilities with
our development
team today.

NEW PRODUCT



Visit us:

daherproducts.com



Modular Support



**Modular Support with
Straight Strap**



**Modular Support
Regular**



**Modular Support with
Velcro Center Support**

The **Modular Support** is used to position trunk in the anteroposterior direction while providing additional pelvic stabilization to individual. It is designed to allow clients maximum freedom within their functional range of motion with a flexible and comfortable support, rather than total restraint. It improves overall clients' acceptance and performance. The pelvic stabilizing belt is bi-laterally adjustable and locks into position allowing the caregiver to place the belt loosely over the individual. By pulling unilaterally on the D-ring tabs, the client can be slowly and firmly positioned and aligned into the support base. The Daher Modular Support improves comfort and sitting balance of the individual as well as eliminate potential choking hazards while on the wheelchair.

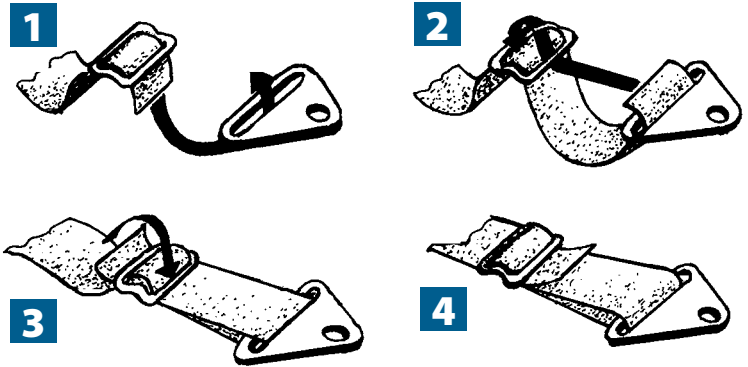
Features:

- Easy to add and remove chest support straps
- Convenience of central front release
- Improved body positioning and pelvic stability
- Eliminate potential choking hazard and suffocation
- Length adjustable straps
- Chest support straps come in different shapes and sizes

Hardware – Attachment Kit



How to put on attachment kit



The padded belts are easily attached or removed using the quick-release center buckle. An added feature is the ability to accommodate different clothing thicknesses by a simple strap adjustment using Tri-Glides, also known as “Slider”.

All three styles of padded [Pelvic Stabilizing Belts](#) come with a choice of 2” (large), 1.5” (medium) or 1” (small) ribbed strapping to reduce buckle slippage. Alternate lengths of the ribbed strapping are available upon request to accommodate various client sizes.

All Pelvic Supports are easy to clean by washing with mild soap and warm water.

NOTE: ONLY LATEX-FREE MATERIALS ARE USED

NOTE: These Pelvic Stabilizing Belts are essential for individuals with high spasticity and/or progressed spinal deformities requiring additional pelvic Stability.

Attachment kit is sold separately from chest harness.
Chest harness requires 1” attachment kit.

– WARNING –

**These Pelvic Stabilizing Belts do not replace seat belts
as approved by the Department of Transport.**

Y-Style Pelvic Stabilizing Belts

This style is designed for clients requiring increased pelvic stabilization, in particular, for clients demonstrating pelvic tilt.

The [Daher Y-Style Pelvic Stabilizing Belt's](#) padding can be applied either with the angled belts placed over the crest of the pelvis or in a position similar to the Four Point Pelvic Stabilizing Belts. The choice is determined by the medically assessed needs of the client.



In either position, the additional padding provides maximum pressure distribution over the pelvis, giving comfortable restraint for most involved cases.

AVAILABLE OPTIONS: For the 1.5" and 2" strap widths, dual-release buckles can be replaced with an automotive-style seat-belt buckle. Due to the design of this buckle, adjustment is limited to one side.

Daher Two Point Pelvic Stabilizing Belts

This style provides support most suitable for clients with minimal involvement. It comfortably prevents the client from sliding forward and/or out of the wheelchair.



AVAILABLE OPTIONS: For the 1.5" and 2" strap widths, dual-release buckles can be replaced with an automotive-style seat-belt buckle. Due to the design of this buckle, adjustment is limited to one side.

Daher Four Point Pelvic Stabilizing Belts

The [Daher Four Point Pelvic Stabilizing Belt](#) is more suitable for clients displaying a tendency to slide underneath the belt or for clients requiring additional restraint as a result of spasticity.

The [Daher Four Point Pelvic Stabilizing Belt](#) has secondary straps sewn close to the front buckles. The straps act as a tether, keeping the pelvic support from riding up or twisting on a client. The primary belt provides maximum comfort, support and stability – the secondary straps assure that the belt will remain in place.



AVAILABLE OPTIONS: In lieu of being directly sewn to the main belt, the secondary straps can be attached using D-rings. For the 1.5" and 2" strap widths, dual-release buckles can be replaced with an automotive-style seat-belt buckle. Due to the design of this buckle, adjustment is limited to one side.

Daher Wheelchair Armrests



Fabricated with the same self-skinning polyurethane material unique to our products, Daher Manufacturing Inc. wheelchair armrests are comfortable and attractive. The textured finish allows easy cleaning with mild soap and water. In addition, the characteristic of self-skinning foam provides superior tear and abrasion resistance.

All armrests are attached using standard No. 10-32 screws.

Stock armrests are available only in black. Other colors may be available when ordered in larger quantities.

Channel Armrests



- Drain Hole
- Wider Forearm Channel
- Higher Back Lip

The higher contoured back lip is ideal for the elbow in place when the chair is tilted to its full angle. The drain hole is ideal for those who would like to attach the armrest to a shower chair.

The **Daher Channel Armrests** are designed to provide optimal support for a weak or paralyzed upper extremity. In addition to support, it also allows rotation of the forearm without limiting the client to a fixed position.

The unique design of this extrusion allows three positions for mounting to any type of wheelchair hardware which uses either 7/8" or 1" tubing. Usually only one channel is needed for mounting leaving two channels open for other attachments, such as straps or other devices, e.g. electronic control hardware. The slider profile is designed to accommodate a stock off-the shelf No. 10-32 flange locking nut.

Unique features of the Padded Armrest:

- Cup to hold the elbow in position
- Relief to accommodate bony prominences, e.g. the olecranon
- Center section of the armrest is rounded to increase area of contact, thereby reducing pressure on the forearm

- Flat rounded surface at the front of the armrest allows the attachment of a therapeutic hand pad

NOTE: A marked indentation locates the center of the circle. By drilling through the armrest, a custom-made hand pad or a stock pad available through Daher, can be attached.

- The two uprights assist in aligning the arm when a therapeutic hand pad is necessary
- Recessed sides allow the client to internally or externally rotate their arm providing a comfortable change of position

Modified Channel Armrest



The **Modified Channel Armrest** is designed to be used with a wheelchair or a powered mobility device. By removing the rounded front section of the armrest, a control can be directly attached to the extension.

The unique design of the elbow cup and uprights helps stabilize the forearm for safer operation of the powered aid.

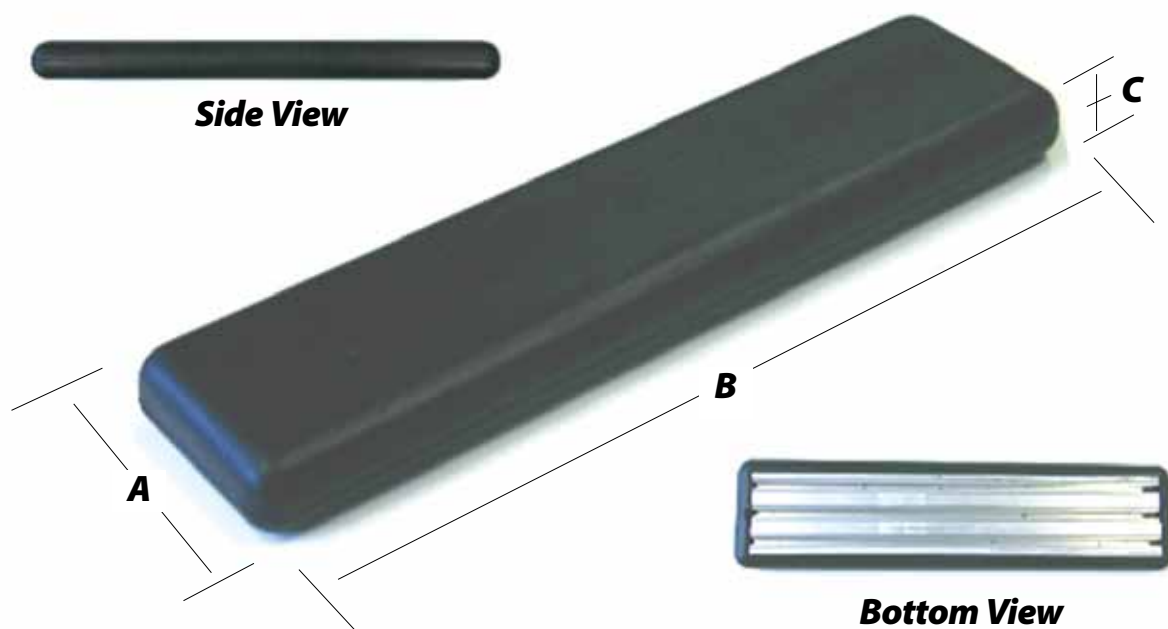


Hand Pad

The **Daher Hand Pad** is designed to prevent flexion contractures of the fingers. The round base fits into the circle of the armrest and the contour of the pad holds the thumb while the upper surface maintains the fingers in a semi-flex position. By rotating the pad 180°, the pad can be used for either the left or right hand side.



Daher Flat Armrest



	A	B	C
Flat Armrest (Desktop)	3 1/2"	10"	1 1/8"
Flat Armrest (Regular)	3 1/2"	14"	1 1/8"

The **Daher Flat Armrest** is a comfortable and durable product that was designed with the end user in mind. With its user friendly wide-top surface, its seamless finish does not trap dirt. This armrest is ideal for those who want the most out of their chair.

The unique design of this extrusion allows three positions for mounting to any type of wheelchair hardware which uses either 7/8" or 1" tubing. One channel is needed for mounting leaving two channels open for other attachments, such as straps or other devices, e.g. electronic control hardware. The slider profile is designed to accommodate a 10-32 flange locking nut.

Elbow Support Armrest



The **Elbow Support Armrest** is available for the left or right side of the body. As the name implies, this product provides additional support to the elbow which is ideal for keeping the arm in place when in a fully reclined position. The armrest is also designed to offer increased forearm movement towards and away from the body.

The bottom of the **Elbow Support Armrest** has an aluminum extrusion which allows for mounting in numerous positions. One of three channels is required for mounting, leaving two channels open for other attachments such as electronic control hardware or a hand pad. By altering the length of an armrest, the combined products can accommodate varying arm length.

Hand Pad



The contour of the **Hand Pad** comfortably supports the hand and wrist while also preventing flexion contractures of the fingers. By using supplied attachment pins, this product can be mounted to any armrest that has an extrusion. The attachment pins also allows the hand pad to be mounted in a variety of positions because the user does not have to worry about screw hole locations and can therefore customize the position to their specific needs.

The **Hand Pad's** dimensions line up with our Elbow Support Armrests and can also be used with the Modified Channel Armrest or Flat Armrest. By altering the length of an armrest, the combined products can accommodate varying arm lengths.

Pictured at right shows Elbow Support Armrest attached to the Hand Pad.



Full Support Armrest



Not everyone's arms are the same length.

This design allows the armrest to be cut down.



Inside area cut is away allowing the option of the arms to be brought in closer to the body, thus narrowing the overall chair.

Adjustable Full Support Armrest



With this option steel inserts are in the back and the sides which allows the armrest to be adjusted to fit a client's specific needs.



Mounting is with Daher's 3-channel system.

Adjustable Full Support Armrest (LH)
Adjustable Full Support Armrest (RH)
Full Support Armrest (LH)
Full Support Armrest (RH)

Regular and Desk Armrests



The Daher wrap-around design of these armrests provides a more contoured and stylish surface than standard pads. The position of the hole spacing allows placement for most standard wheelchair armrests. Both armrests add one inch of height once mounted.

Lateral Support Armrest



Features:

- High sides to help keep the arm in place.
- High back to support the arm. Especially useful in a high degree of tilt.
- Relief area for the elbow.



The sleek inside edge is designed to allow the armrest to fill up on the chairs that have that capability.



Swivel Armrest Mount



The **Swivel Armrest Mount** is designed to increase the effectiveness of an armrest by offering multi-position mounting. The swing-away and lock into position features help with arm positioning and are useful for transfers. The mount can be attached to 7/8" tubing for armrest frames and features a breakaway connector for emergency exit of client from chair. The multi-position arm support provides increased arm positioning access for assistive devices such as cell phone use and call bells.

NOTE: Optional 1" mount is also available.

Portable Toilet Seat Pad

- Adds height
- Adds comfort
- Durable
- Portable
- Avoids pinching



The **Daher Portable Toilet Seat Pad** is a clever and simple design which adds height and makes it portable, light weight, water resistant and easy to maintain. It is ideal for an institutional setting, in your home or to take it with you.

The underside molded, non-marring clips prevent the pad from falling off the seat and eliminates the need for any other attachment devices. The curvature design was determined by measuring and averaging a number of stock toilet seats. Consequently, the pads clip on to nearly every toilet seat on the market. Since an important characteristic of self-skinning foam is water resistance and easy maintenance, these properties proved to be ideal for this application. The product proved to be comfortable, convenient and simple to use. The product also has a record of excellent durability.

The Toilet Seat Pad is light weight and inconspicuous when transported in the supplied carrying bag.

Custom Covers



Lamb skin covers are now available for our armrests.



Replacement Buckles

Throughout the 30 years Daher has been in business buckle styles have evolved. The best way to ensure that the replacement buckle you are ordering is the same style as the ones you currently have is to send us a picture. Daher can then consult with their suppliers to match product codes. If it is an old-style buckle, please be advised it may take some time to order the parts in as we may not currently have any in stock.

Daher products that use buckles are our Chest Harnesses (1" only) and Pelvic Stabilizing Belts (1", 1.5" and 2"). The ribbed strapping, also known as webbing, is measured according to its width and should be matched with buckle sizes accordingly. For example, a Y-Style Pelvic Stabilizing Belt 2" will require a Replacement Buckle 2".



Knee Support Belts



The **Daher Knee Support** is designed to keep the client from slipping out of the chair. This simple design, in some cases, can eliminate the need for a seat belt or a three point belt.

This support is padded with a gel-like material to ensure maximum comfort.



CORPORATE PROFILE

Daher Manufacturing Inc. specializes in custom molded products using the Reaction Injection Molding (RIM) process. The RIM process allows a variety of materials (*e.g. flexible self-skinning foam, non-skinning flexible foam, and rigid foam*) to produce an almost infinite possibility of shapes and densities designed to meet our customer's specific needs.

We are proud to service a wide variety of industry sectors, including:

Health Care – (e.g. wheelchair accessories, dynamic surgical positioning devices, multi-purpose treatment and surgical chair armrests);

Transportation – (e.g. grab rails, padded covers, and full dashboards for tour buses);

Recreational and Construction Vehicles – (ATV back and headrests, snowmobile backrest/seats);

Amusement Park Rides and Games – (e.g. seats, headrests and protective padding for games);

Technical Furniture – (e.g. nosing assemblies and a variety of keyboard rests for highly specialized computer centers).

Daher Manufacturing Inc. provides a full service starting with your design or concept from a sketch, model or drawing. Cost-effective prototypes using epoxy tooling allows you to test your product and make any necessary modifications or refinements before permanent tooling is ordered. In partnership with some of the best mold makers and finishers in North America your CAD drawings can be directly used to produce a mold to your precise specifications.

All products are manufactured and tested to the highest industry standards to ensure safety, comfort and reliability. Contact us with your new wheelchair accessory idea. Call us today!

COMPANY HISTORY

For over 30 years Daher has specialized in custom foam molding. Founded in 1977 under the name Engineered Therapeutic systems, the company produced products specifically designed to assist the non-ambulatory handicapped population.

In 1994, Daher Manufacturing Inc. was founded to specialize in newly designed polyurethane foam and industrial sewing products. We are proud to say that our products are the result of more than 30 years experience in the design and manufacture of health care aids. Furthermore, our quality assurance program controls the entire production process from initial concept to delivery, ensuring superior merchandise and reliability at the most cost-effective prices.

Major improvements to Daher's High Quality Wheelchair Accessories product line are the result of on-going caregiver and end-user consultation. Daher Manufacturing Inc. acknowledges and appreciates input from therapists, home care personnel, those providing direct care and the end users of our products.

We welcome the opportunity to discuss a new product design or improvements and recommendations for our current product line. Working as a team with your staff, we can enhance the ergonomics and comfort to ensure the people in your care are as safe as they are comfortable.

DAHER

Many of our products can be altered and/or modified to accommodate specific client needs.

Please contact us for more information.

Phone: 204-663-3299 | Fax: 204-663-3422

Email: sales@daherproducts.com | www.daherproducts.com

SPECIALTY FOAM PRODUCTS

- Healthcare
- Transportation
- New Product Development
- Composites
- Sports & Recreation
- Amusement Parks & Attractions



DAHER

www.daherproducts.com